



January\February 2024

Sustainability Equals Growth

Merle Stoltzfus

Every household within 150 miles should plan a day trip to Ellis Island. There is no excuse for illegal immigration. It is illegal and therefore criminal. But, within the unhealthy current political discourse around immigration, a few hours of historical facts may give a good perspective on how our country has been continually sustained through the steady and controlled legal growth and diversity of our population through immigration. Most families have a high probability of a relative or friend's family relationship who came to America through Ellis Island. In particular, the display of the pattern of worldwide immigration over the most recent centuries tells a fascinating story. Of course, every time someone immigrates to a country, they must leave a country. As the pattern and history is studied, receiving countries prosper while the giving countries are depleted. After all, humans are a country's most valuable resource.

What is true about population growth in countries is consistent with all political subdivisions; states, counties, municipalities. If health and safety systems can keep pace, the rate of population growth is commensurate with human flourishing. This is factual throughout world history. Government systems attempting to intervene (like "one child policies") have always been reversed because of the negative consequences. In the last 50 years, cultures and countries with policies resisting familial growth are now creating financial

incentives to mitigate the economic and sociological challenges of zero growth.

But we all know how people always bring challenges with them. We also know human nature prefers the status quo and discourages change. The acronym NIMBY is all too familiar to existing communities; especially those already comfortable and economically prosperous.

The resistance to growth may serve a community well for a generation but will be detrimental to the next. In all communities, humans are the greatest and most valuable resource.



Elverson in 1992—population 466.

Elverson's comprehensive plan (Chapter 2; "Goals and Objectives") states and sets a vision for steady growth. People bring their challenges but the benefits for all of us and our children are historical fact. It is equally true how diversity in income levels, ethnicity and traditions reaps great benefit to develop culturally competent communities. Our greatest square mile status is a result of growth, especially over the past 3 decades. The creation mandate to "be fruitful, multiply and replenish the earth" is a proven blessing for the human race; every tribe; every nation is the ultimate community.

"Those People" are unknown strangers formed in our imagination. We all wore this name tag before we called Elverson, home. New people will bring challenges, but welcoming growth has a history of success. Utopia is unrealistic in this world but a community labeled "the Greatest Square Mile" will only be sustained by welcoming growth.

Christmas Caroling in the Borough of Elverson – 2023

Doug Mountz

Sunday evening, December 17, 2023, had been set well in advance for the Elverson community to gather for an early evening of Christmas caroling. However, any expectations that carolers would gather around the lighted Christmas trees, in lightly falling snow, at the Elverson Methodist Cemetery entrance were quickly laid to rest. Instead, a mild but rainy evening determined that the caroling would take place across Main Street, inside of the Elverson Methodist Church.

In all there were over 20 children and adults from within the Borough as well as former Elverson residents in attendance. There, in the shelter of the Social Room of the church, voices united in traditional songs and hymns declaring the birth of Jesus Christ, Immanuel, God with us! The beautiful strains of a cello, played by Kate Wenrich, served to marshal the varying quality of vocal gifts into one joyful expression of music. Light refresh-



ments followed and with them the opportunity to fellowship by “catching up” on each other’s lives as well as renewing old friendships.

In each of us there is a longing to recall the good from the past, to revisit it regularly, and preserve it for future generations. It’s called, “Tradition”. For many years Memorial Day ceremonies, Elverson Day festivities, and the Fall Parade have been carried out faithfully and well in our Borough. The tradition of Christmas caroling is, arguably, one that is well worth preserving for generations to come.

Thank you, Elverson Methodist Church, for opening your doors in the Christmas spirit of hospitality and goodwill. Let us resolve to continue the caroling tradition at Christmas season in 2024, that it might take its place among the other traditions that Elverson has preserved so well

BENEFIT GALA FOR THE ELVERSON SKATEPARK

The sound of laughter in the air and happy children out playing. The smell of freshly cut grass and the warm breeze pushing across the park. Baseball games being played and families on the playground. All of these are memories attributed to days spent at Livingood Park.

For many of us, Livingood Park provides a perfect place in Elverson for a chance to enjoy the great outdoors. We can enjoy walks, playgrounds, and sports fields. All of these are activities that are worthwhile and needed.

It is with great excitement that we now have an opportunity as a community to give back and expand our recreational activities and build into the park. With the approval of a portion of land to be used for a community skatepark, we as a group can positively impact future generations.

Action-Impact, a local non-profit, is heading up the next phase of the skatepark project. With the project being 20% funded, Action-Impact will be hosting a Benefit

Gala on Saturday, February 24 at 6:30 pm. The event will be located at their youth ministry building: 80 Vickery Lane, Elverson.

At the event, we will be discussing how to be directly involved in the project through fundraising and future opportunities, how the skatepark will benefit the community, and the exciting things we have planned! All are welcome and we hope to see local businesses and business owners come out and take part in improving our local community.

Light refreshments

and desserts will be provided. Business casual attire is recommended.

We are asking you to join us on this night and invite others who have an interest in our community and recreational expansion.

More information is available at:
www.GiveSendGo.com/elversonskatepark
RSVP: Elversonskatepark@gmail.com

Saturday, February 24th, 2024
6:30pm



Located at: Action-Impact
80 Vickery Lane, Elverson, PA 19520
More info at:
GiveSendGo.com/elversonskatepark



The Whole Child Learning Center, Inc.

The Whole Child Learning Center family just celebrated its **20th Anniversary** and spent the day on February 9th reminiscing about all the dedicated staff and teachers that helped them achieve this tremendous milestone. According to its founders, it has been a privilege serving the families of Elverson and the Tri-County area. We have made lasting friendships and cherished the time helping so many children prepare for their future.

In 2001, this center was the dream of two local women, who had been working in childcare since the age of sixteen. Kathy and Kim spent several years designing and planning an early learning center with a true family atmosphere where parents could feel confident dropping off their children, knowing they would be loved and cared for, as they would at home. They wanted an exceptional curriculum with hands-on-learning, top of the line security, staff continuity and flexible schedules. This dream became a reality with the help of Kathy's dad, who collaborated with the girls to create The Whole Child Learning Center, Inc. Together they created a learning center that has been making a difference in the lives of local children and families for over two decades.

It is a true family atmosphere at the WCLC. Their skilled staff are genuinely passionate about fostering a love of learning for each child. Kathy's own three children have grown up at The WCLC and continue to be a part of the journey along with her husband and her father. The WCLC has left an unforgettable impression on the life of each child that has passed through its doors. It is so exciting and rewarding to see young people who were once infants and toddlers at the center return for internships and job opportunities, and some of our graduates even enrolling their own children. Kathy Borkowski, MAED, has been the driving force behind The Whole Child Learning Center, Inc. She envisioned a space that goes beyond conventional education – a place where the social, emotional, physical, and cognitive development of the whole child are equally prioritized. Her dedication has sparked the mission for the existence of this remarkable center, to create an environment that feels like a second home for every child.

For two decades, The Whole Child Learning Center, Inc. has been more than just a childcare facility; it has been a place where children flourish, families connect and where community comes together. We look forward to seeing what the future holds for our WCLC family.



Philo Physical Therapy, Inc., located at 102 S. Pine Street, is a physical therapy practice that started in Elverson two years ago. Our practice has thoroughly enjoyed working with the Elverson community. At Philo, which is Greek for "friend," our mission is to serve the Elverson community by providing highly skilled, personalized, and one-on-one physical therapy to address any functional limitation, pain, or difficulty that an individual may have. We offer services that treat a variety of conditions, including chronic pain, headaches, post-concussion syndrome, dizziness, neurological disorders, orthopedic surgery recovery, as well as functional nutrition. Thomas Crassas, owner and physical therapist, has 20+ years of experience working with national and international

patients. He has had great success eliminating pain conditions that have not improved elsewhere or with other treatments.

All of our therapists share a passion for helping others, getting to the root cause of pain, and making a difference in each and every patient's life. We highly value each individual that comes into the clinic, and we make sure that your care is our number one priority. Our highly skilled manual therapy treatments and muscle activation techniques could be the difference in eliminating your pain and allowing you to live your life to the fullest. You do not have to live in pain! Call our office today at **610-901-4010** to schedule an appointment in either our Elverson or Wyomissing location. We look forward to meeting you and helping you achieve your goals.

Continued on p 4

Continued from p 3.



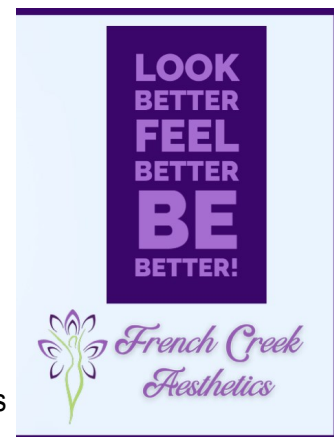
A-Z Urgent Care/ Medical Center continues to promote comprehensive wellness for Elverson and the surrounding communities. To combat the cold and flu season, **A-Z IV Clinic** (located in A-Z Urgent Care) offers IV Fluids with or without medication to provide hydration and promote a faster recovery from your seasonal illness.

A-Z Urgent Care welcomes **Michael Lopez, N.P.** Mr. Lopez provides Primary Care, and has expertise in women's health and infectious diseases.

Patients now can join **A-Z Health Membership**, (it includes unlimited primary care appts., same-day visits, free gym membership, and more). Need additional information? Please call us at **610-901-3900** or stop by at 45 S. Pine St. Elverson.

There may be other day-and-medi spas out there, but there is only one **French Creek Aesthetics**, (FCA). While FCA offers facials, therapeutic facials, injections, and massages, what makes us stand out is our **European approach** and European skin care products. If you are having trouble with discovering the right skincare routine for yourself, or don't know which products to use for your skin, FCA is here to help. Visit FCA to learn more about your skincare goals at FrenchCreekAesthetics.com. Or call us at **610-901-3915** to schedule an appointment! Take some time to treat yourself; you deserve it!

FCA's **Medical Weight Loss program** has been helping clients on their journey to achieving their best selves. The reduction of weight leads to a reduced risk of heart disease, strokes, hypertension, sleep apnea, and various orthopedic issues. We offer complimentary weight loss consultation.



Kinetic Physical Therapy is excited to announce our new name, Kinetic – Movement Reimagined! Over the past 17 years Kinetic has been recognized for the delivery of outstanding, evidence-based, physical therapy driven by our Doctors of Physical Therapy, in Chester, Montgomery, and Delaware County. Kinetic's expanded model offers movement health opportunities for our communities, addressing comprehensive movement wellness programs, including PT, post PT recovery, and programs that impact the success and maintenance of diverse individual lifestyles.

Our commitment to movement health integrates models for all ages as we guide generations with the knowledge to define and achieve their movement goals. Kinetic Stretch, Kinetic Strength Training, and Kinetic Sports Performance, along with our unique educational wellness programs, address a wide range of areas such as balance, agility, strength, and endurance, important to the movement health of the mind-body at all stages of our lives. We welcome your questions and offer complimentary assessments and free Kinetic Stretch sessions. For those interested in the details on our free, educational and experiential educational programs, we are here to understand the educational content that meets the needs of your community and or businesses. Please visit us at kineticptpa.com. and check out Kinetic – Movement Reimagined, our new website! For questions, please feel free to email me at chrisc@kineticptpa.com. Thank you, Dr. Chris Coppins, DPT, Clinic Director of Kinetic in Elverson.

Continued from p 4.

Phoenix Physical Therapy is proud to welcome Kayla Klumpp, PT, DPT to our practice in Elverson. Dr. Kayla Klumpp, a local resident of Honey Brook Pennsylvania and 2011 Twin Valley graduate, is now joining our team at Elverson Phoenix Physical Therapy. Kayla graduated from Lebanon Valley College in 2017 with her doctorate in Physical Therapy. She went on to become a Certified Orthopedic Manipulative Therapist (COMT) in 2020 and is now newly inducted into a fellowship program for manual therapy through the North Atlantic Institute of Orthopedic Manual Therapy (NAIOMT).

Kayla's philosophy of treatment is to fully assess every condition on a biomechanical basis, deliver hands-on intervention when appropriate, followed by therapeutic exercise to retrain movement patterns, decrease pain, and improve function. She has seen success in treating orthopedic, pre and post-surgical, neurologic, and vestibular conditions. Kayla is now broadening the scope of care at our Elverson clinic to include treatment of Temporomandibular Joint Dysfunction (TMJ/TMD). In the clinic, Kayla is known for her high-energy and bubbly personality.

Call our office at **610-286-0977** today to schedule your appointment! We welcome new patients to our clinic and accept most insurances.



Elverson Fitness Club knows that accountability is the key to achieving wellness, and that it can be difficult to adopt a new healthy habit! That's why we offer a warm and welcoming space, with multiple rooms for independent and group exercise. We are proud to offer a wide array of group fitness classes, and personal training support for those looking to embark on a fitness journey with 1:1 support. We have two personal trainers who will work with clients on-site, Carol Ruffner and Mike Rudolf. Carol and Mike both have several years' experience with personal training and fitness coaching, and can work with you on setting and achieving your goals!

We strive to offer affordable and competitive pricing for everything from membership to personal training, for those wanting more support. Adult memberships are \$45/month with a one-time \$50 enrollment fee; student and senior memberships are \$25/month with a \$30 enrollment fee. Personal training is offered at \$50/session, 3 sessions for \$135, 6 for \$255, or 12 for \$480, with a 180-day expiration from date of sign up. If you have any questions or would like a tour, call or stop by during staffed hours (M-Th 9a-12 or 4-7p; Fri-Sat 9a-12). We are located at 51 S. Pine Street in the heart of Elverson and would love to see you soon!

E.A. FUNK CO. INC.
CUSTOM BUILDER &
CABINETMAKER

*Making Homes more
valuable since 1989!*

610-344-9200 • www.funkcarpentry.com
PA License# PA010661

Elverson Events in 2024

- **Yard Sale**—Saturday, May 18—8 am to noon - all over town
- **Memorial Day Observance**—Monday, May 27—10:30 am—Elverson Cemetery
- **Day in the Park**—Saturday, June 29, 5 pm to dark—Livingood Park
- **Parade**—Wednesday, October 16—7:00 pm—Main Street



Help Wanted Borough of Elverson – Secretary/Treasurer

The Borough of Elverson is currently accepting applications for the position of Secretary/Treasurer. This part-time role reports to the Borough of Elverson Council President. It is an integral part of the administrative team and involves handling various responsibilities related to administrative management and treasury duties.

Qualifications:

- Proven experience in secretarial/office management and treasury roles.
- Familiarity with financial management software.
- Strong organizational and multitasking skills.
- Excellent communication and interpersonal abilities.
- Knowledge of local government operations is a plus.
- Current Notary Public or willingness to obtain.

How to Apply:

A full job description can be found on the Borough's website, elversonboro.org. Interested candidates should email their resume' and a cover letter to secretary@elversonboro.org, or mail to Elverson Borough, P.O. Box 206, Elverson, PA 19520, please note "Application" either in the subject or address line. The deadline to apply is April 30, 2024.

GRIEF SUPPORT GROUP

Help and encouragement after the
death of a loved one

GriefShare is a special weekly seminar and support
group designed to help you rebuild your life. We
know it hurts, and we want to help.

Thursdays 7:00pm – 9:00pm

March 7 - May 30

Brick Lane Community Church, 610-286-6790

52 S. Brick Lane, Elverson PA 19520

griefshare@brick52.org

McCormick Chiropractic

Leaders in Structural Correction

Over 30 Years Family Run

POTTSTOWN 610-705-0201 BERWYN 484-320-7902 ELVERSON 610-286-7000

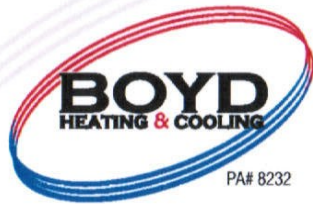
Simple-Smart Solutions

Simple-Smart Solutions for all your remodeling needs

Bill Gondy
610-310-7928



wjgondy@gmail.com
PA #057789



PA# 8232

RESIDENTIAL & COMMERCIAL

Sales • Service • Installation
Gas • Oil • Heat Pump • A/C

- Emergency Service
- Maintenance Contracts
- NATE & ICC Certified
- Professional and Dependable

610-286-5766

BOYD HEATING & COOLING, Inc. P.O. Box 483, Elverson, PA 19520
www.boydheatingandcooling.com



STOLTZFUS REALTORS

610.286.5117
stoltzfusrealtors.com

YergeyDaylor

Allebach • Scheffey • Picardi
ATTORNEYS AT LAW

Gregory W. Philips, Esq.

1129 E. High Street
P.O. Box 776
Pottstown, PA 19464

610.323.1400
GWPhilips@ydaspc.com
www.ydaspc.com

BRICK LANE SELF STORAGE

76 South Brick Lane
Elverson, PA 19520

8X20 storage units
610-286-9119

484.888.6526

TH13TEEN
consulting

tax + accounting

STEVEN M. FRANK, CPA/ABV
President

56 SADDLER DRIVE ELVERSON, PA 19520
www.13consultingllc.com • steve@13consultingllc.com



**Integrated
Medical
Group, P.C.**

Timothy J. Gill, MD

Board Certified Family & Sports Medicine

P: (610) 396-5163

23 N. Walnut St. | 1555 Medical Dr. | 45 S Pine St
Boyertown, PA 19512 | Pottstown, PA 19464 | Elverson, PA 19520

Send your Elverson news and stories to our editor at brenda@stoltzfus.com by March 15 or call her at 610.286.5115. Newsletters can be found on elversonboro.org.

**Elverson Borough
PO Box 206
Elverson PA 19520**

RETURN SERVICE REQUESTED

PRST STD
US POSTAGE
PAID
READING, PA
PERMIT #415



Main in Elverson— Feb 2024

Many Hands— *Esther Prosser, Elverson Mayor*

Most are familiar with the adage—many hands make light work. Elverson hands are everywhere and they're making a difference. A few weeks ago, we held our annual Elverson Neighborhood Watch Block Captain meeting. About 20 block captains showed up to connect with each other and hear from Trooper McKee, a PA State Police officer who is one of many patrolling Elverson. He said a frequent crime is stolen packages from front porches. Ring cameras are helpful but thieves many times wear hoodies and are not recognized so the key is getting the car license plate on the camera. He reminded us to call **610-486-6280** to report problems. He voiced his appreciation for our block captain group and our diligence in crime prevention in Elverson.

Other examples of many hands? A log blocking our trail to the Blue Rock Community was cleared. Unsightly leaves at the N Pine entrance to 23 were removed. Our pedestrian signs along Main are repaired regularly. The free library at the Livingood Park is consistently fixed and improved upon. Volunteers are helping to keep our municipal property taxes at zero.

If you think of other ways that hands can help or are reading this, wondering how you can volunteer, let me know. Residents working together to keep Elverson safe and beautiful is one way to keep our square mile the greatest.

Please send your ideas and questions—esther@stoltzfus.com, 484.269.7153.

